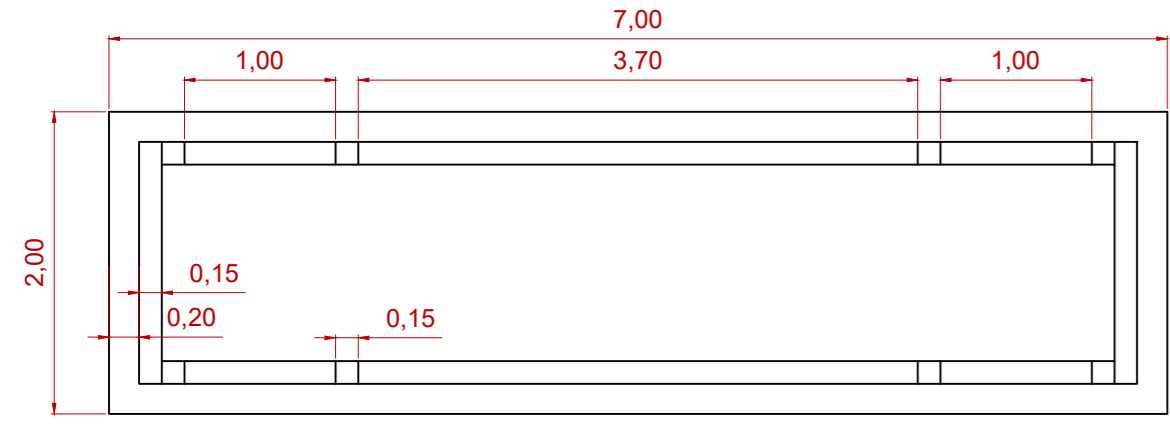
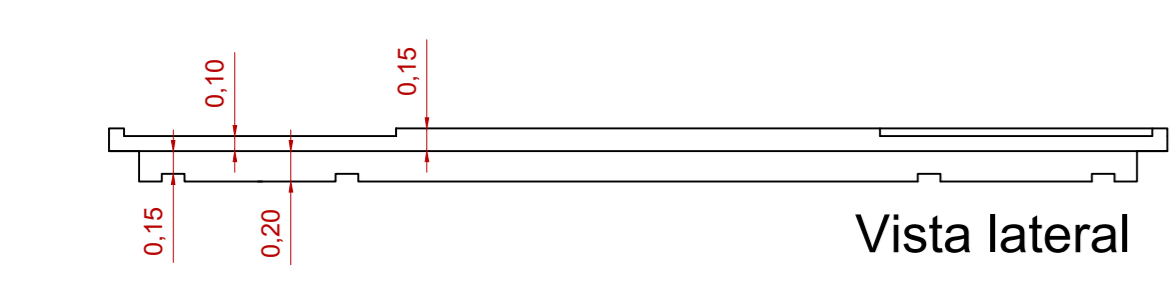


Vista superior

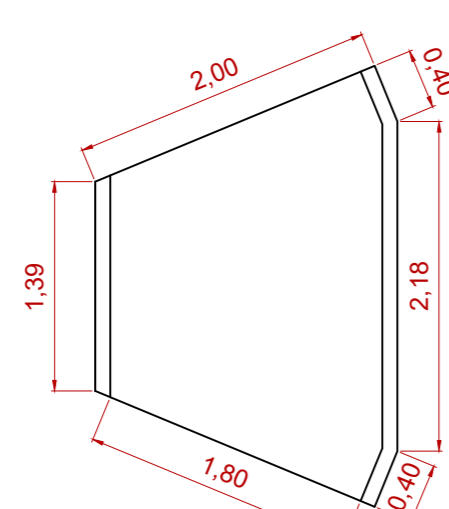


Vista inferior

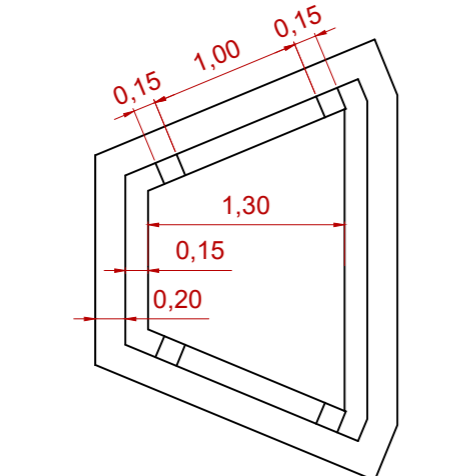


Vista lateral

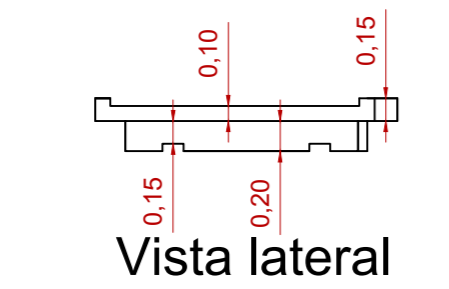
Patamar 7,00 m
Volume: 1,93 m³
Quantidade: 01 unidade



Vista superior

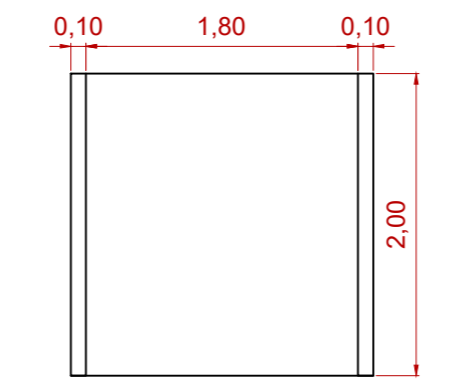


Vista inferior

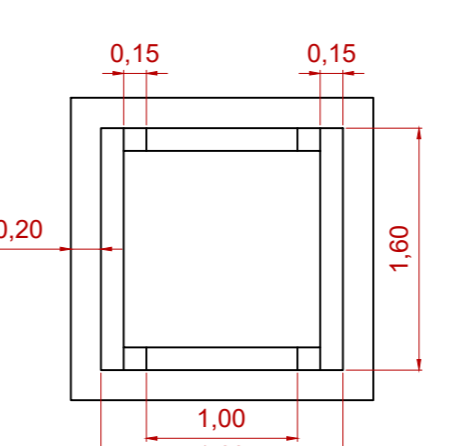


Vista lateral

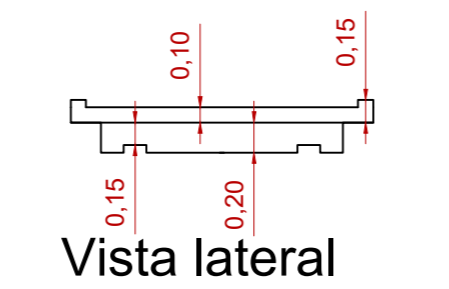
Patamar 45°
Volume: 0,64 m³
Quantidade: 01 unidade



Vista superior

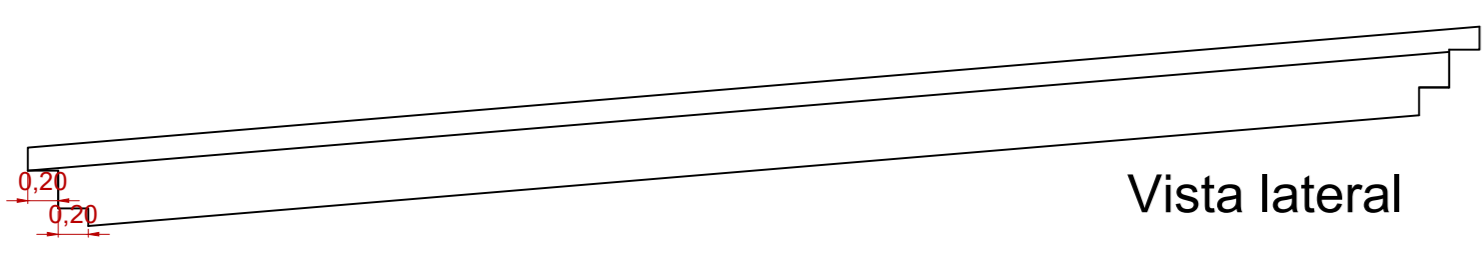


Vista inferior

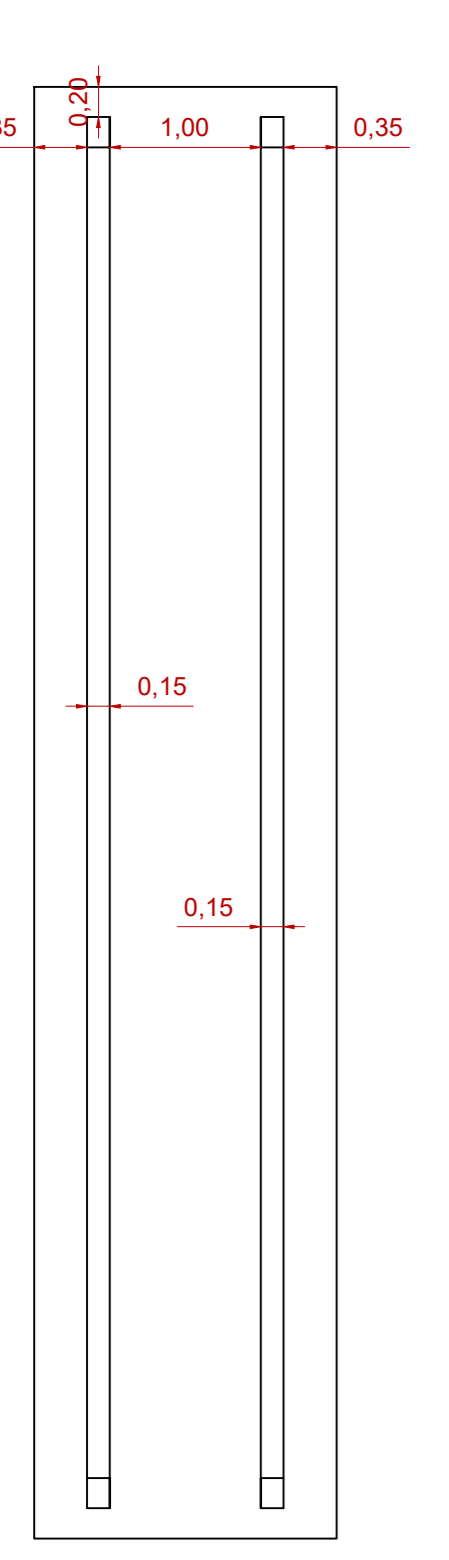


Vista lateral

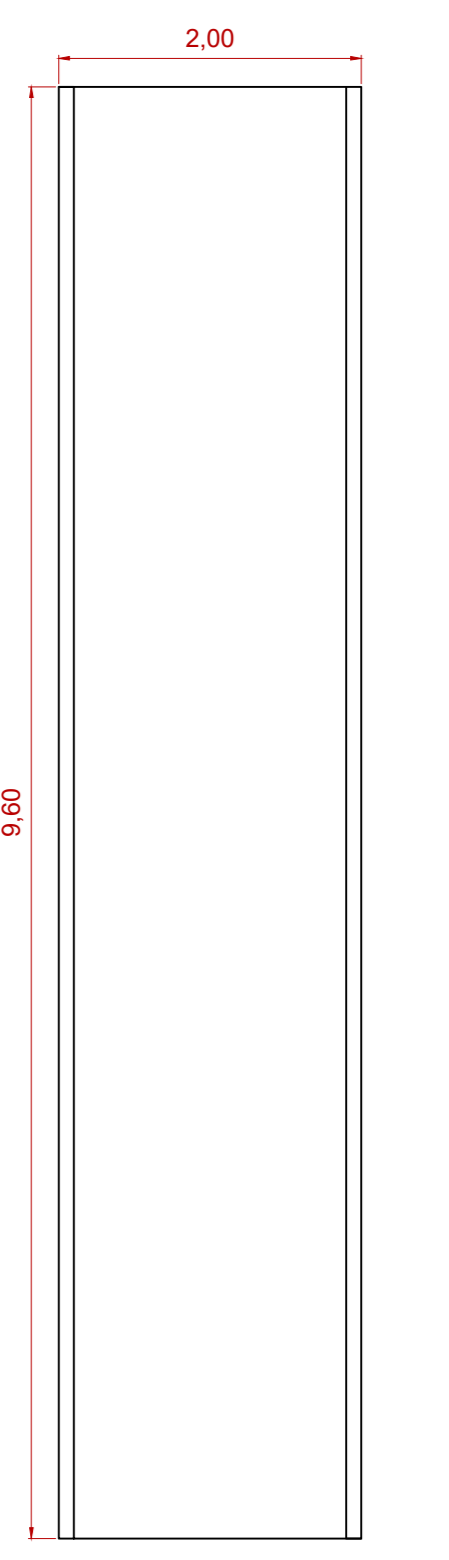
Patamar 2,00 m
Volume: 0,59 m³
Quantidade: 02 unidade



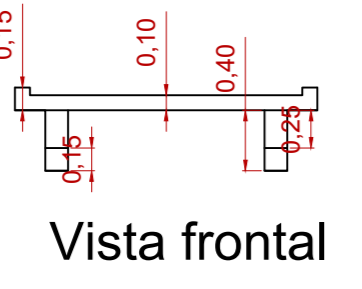
Vista lateral



Vista inferior

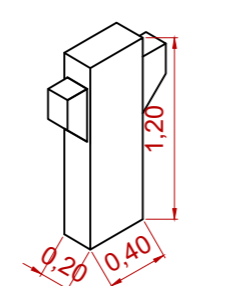
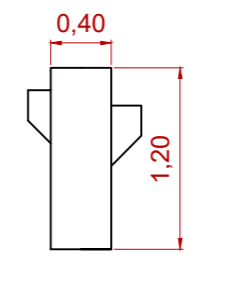


Vista superior

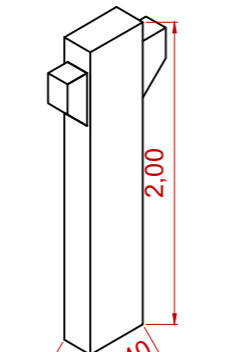
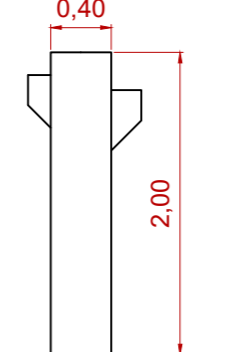


Vista frontal

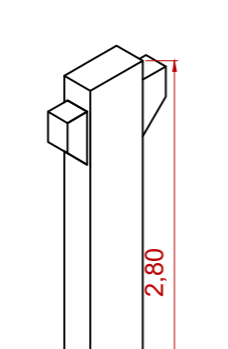
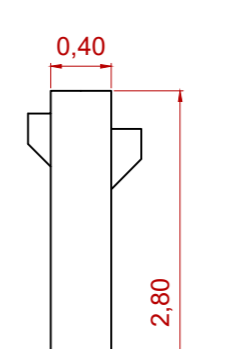
Rampa 9,60 m $i=8,33\%$
Volume: 3,11 m³
Quantidade: 03 unidade



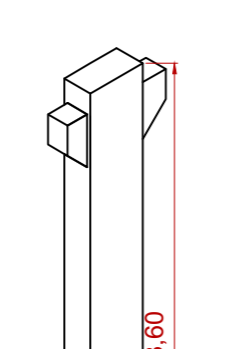
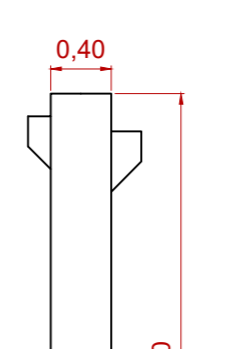
Pilar 1,20 m
Volume: 0,12 m³
Quantidade: 02 unidades



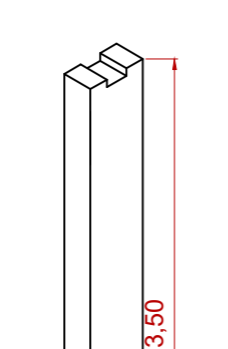
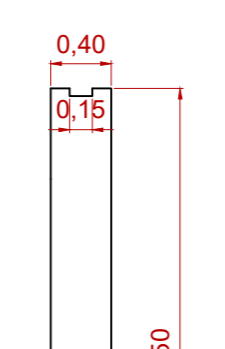
Pilar 2,00 m
Volume: 0,18 m³
Quantidade: 04 unidades



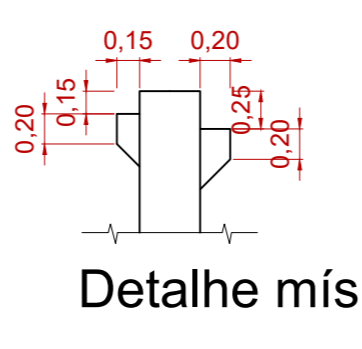
Pilar 2,80 m
Volume: 0,24 m³
Quantidade: 04 unidades



Pilar 3,60 m
Volume: 0,31 m³
Quantidade: 02 unidades

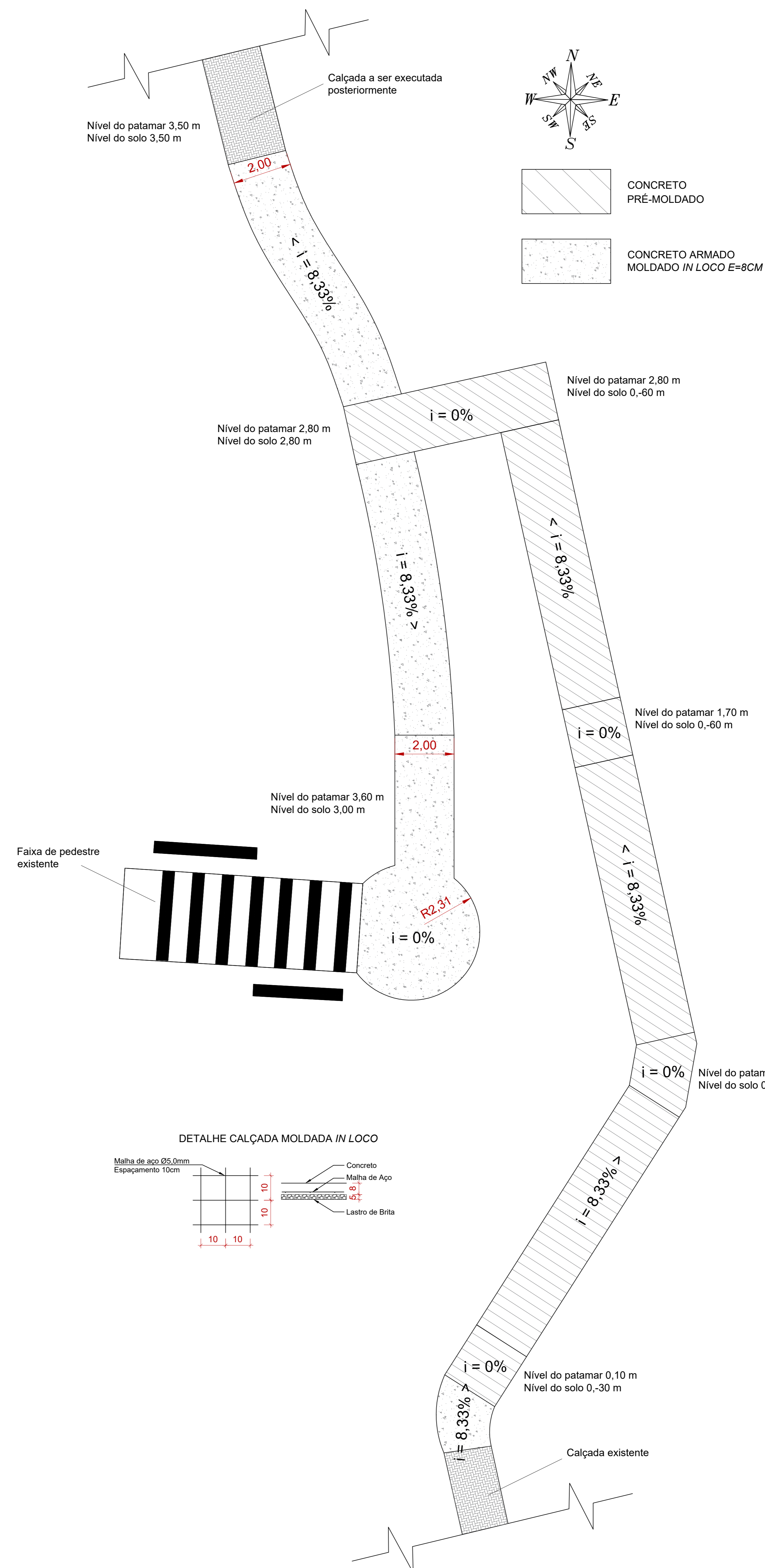


Pilar 3,50 m
Volume: 0,28 m³
Quantidade: 01 unidade



Detalhe misula

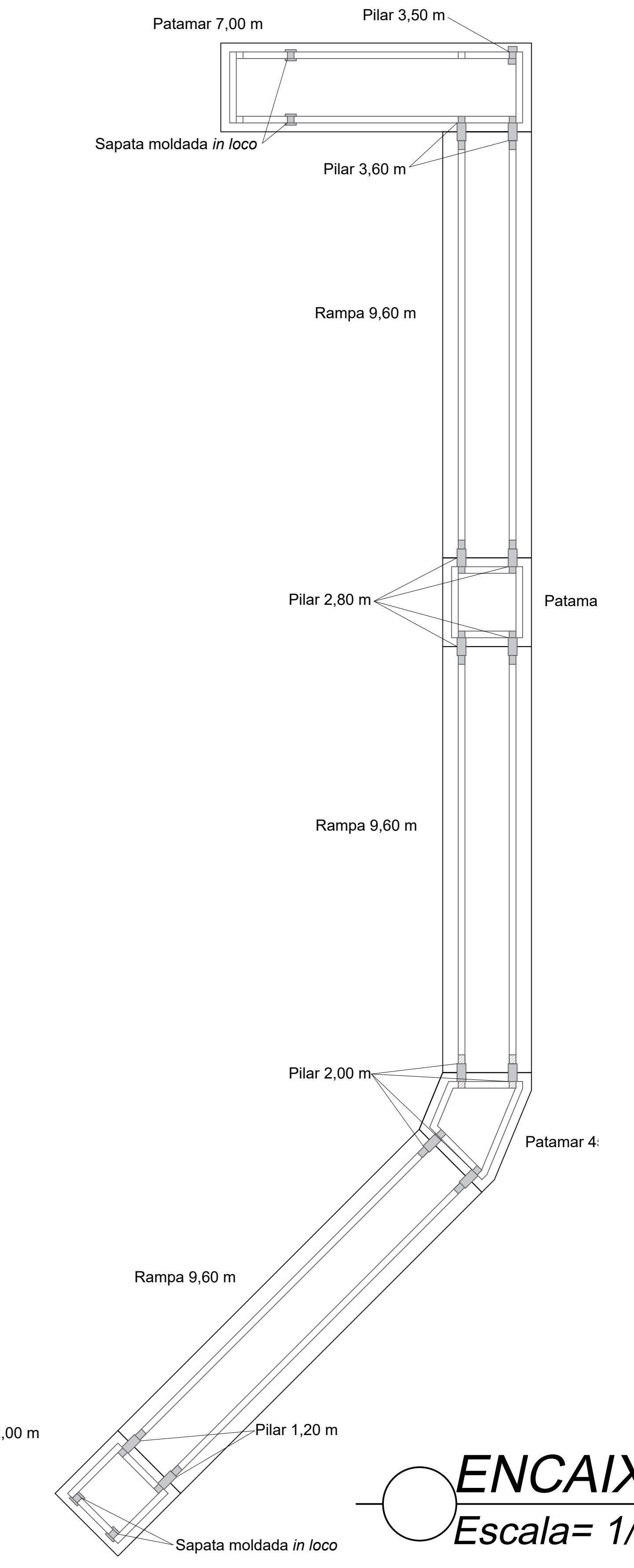
DETALHE ELEMENTOS
Escala= 1/50



PASSARELA EM PLANTA
Escala= 1/75



LOCAÇÃO DA OBRA
Sem escala



ENCAIXE
Escala= 1/75

PREFEITURA MUNICIPAL DE IPIRA

PROJETO: PROJETO PASSARELA		
ENDEREÇO DA OBRA: RUA EDMUNDO WOLFART, 814, CENTRO - IPIRA / SC	ESCALA: INDICADAS	PRANCHA: 01/02
DESCRIMINAÇÃO: ARQUITETÔNICO E DETALHES CONSTRUTIVOS	DATA: SETEMBRO/2021	DESENHO: GUILHERME KOCH
RESP.PROJETO:	RESP.EXECUÇÃO:	PROPRIETÁRIO: