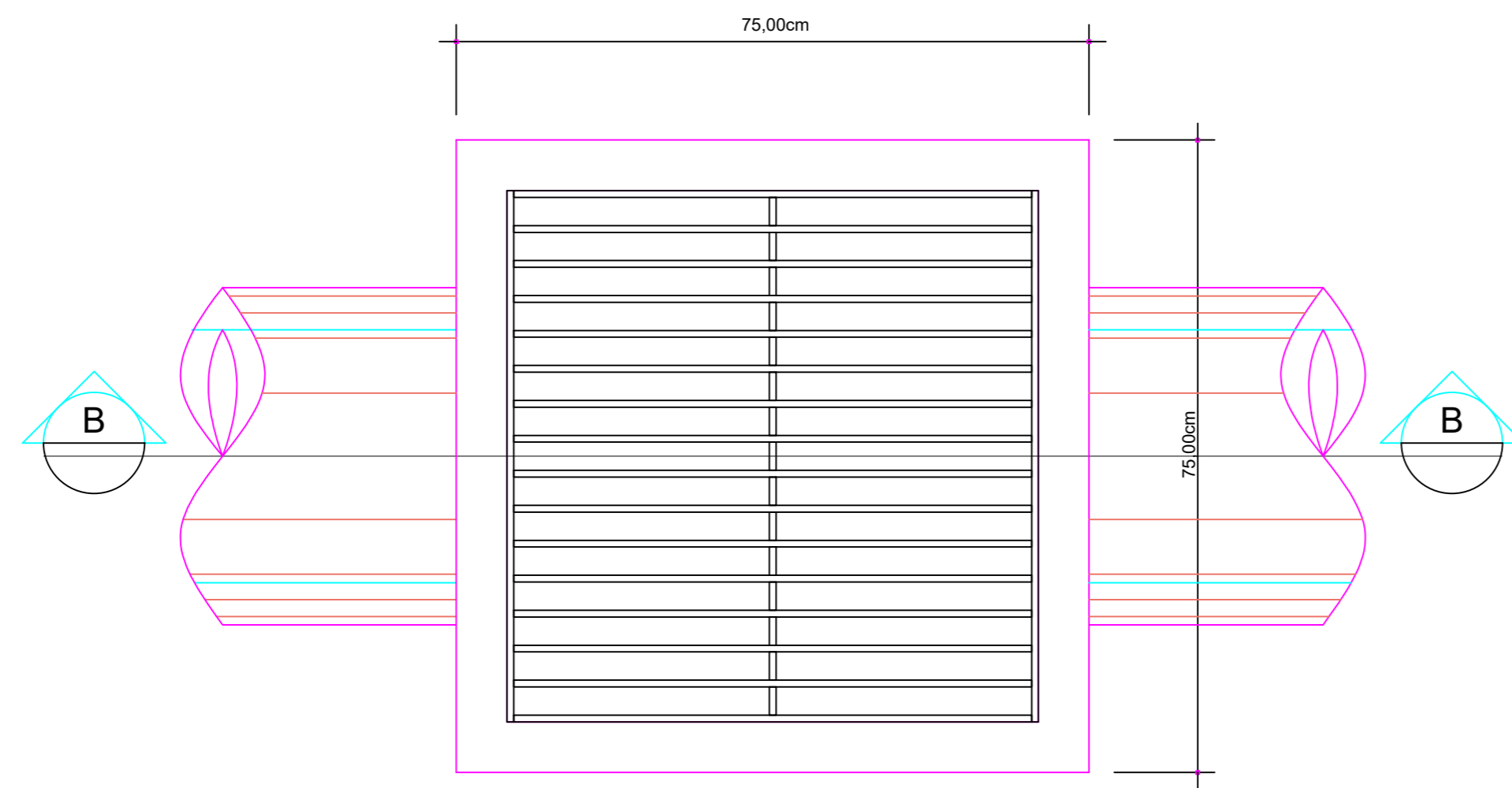
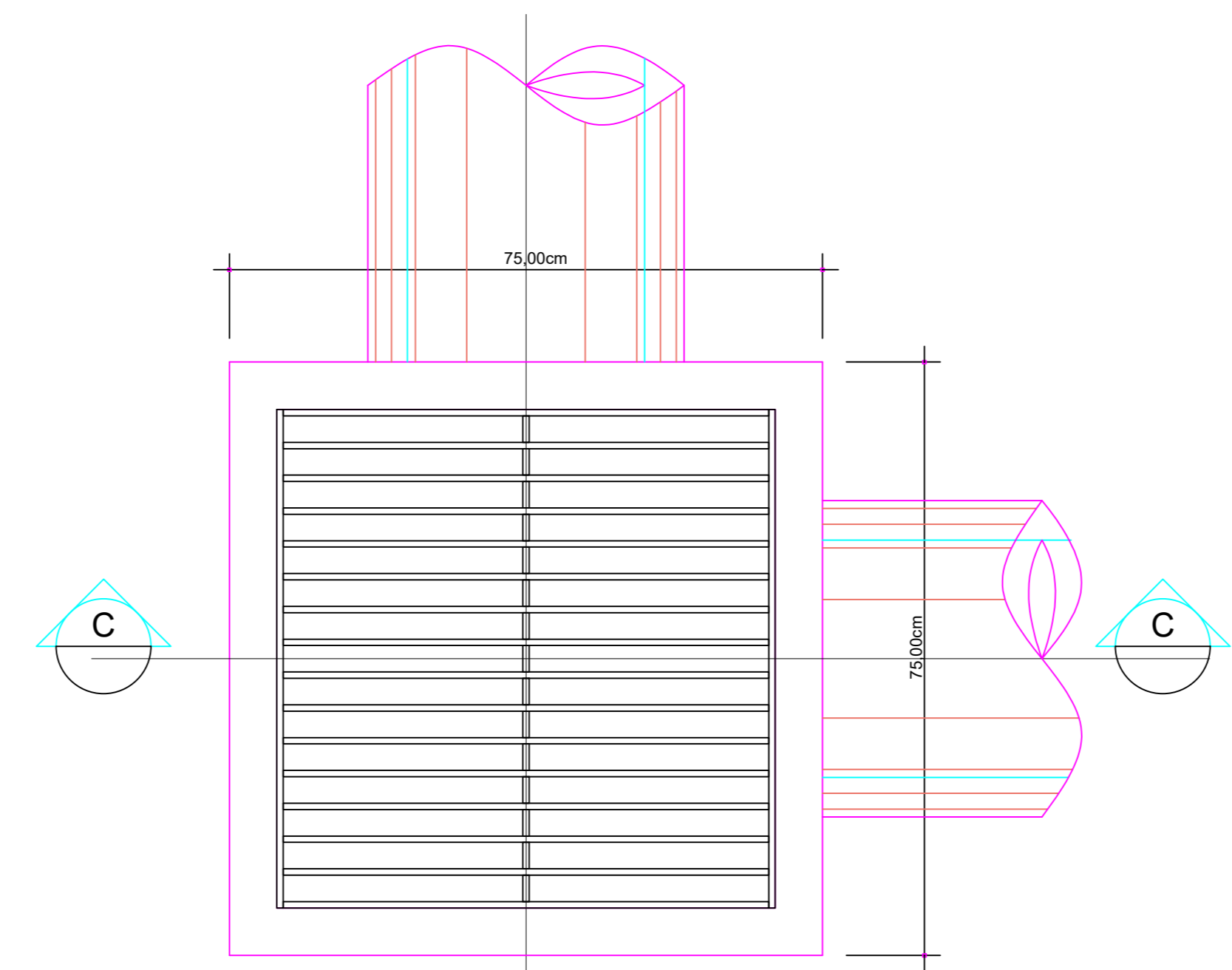


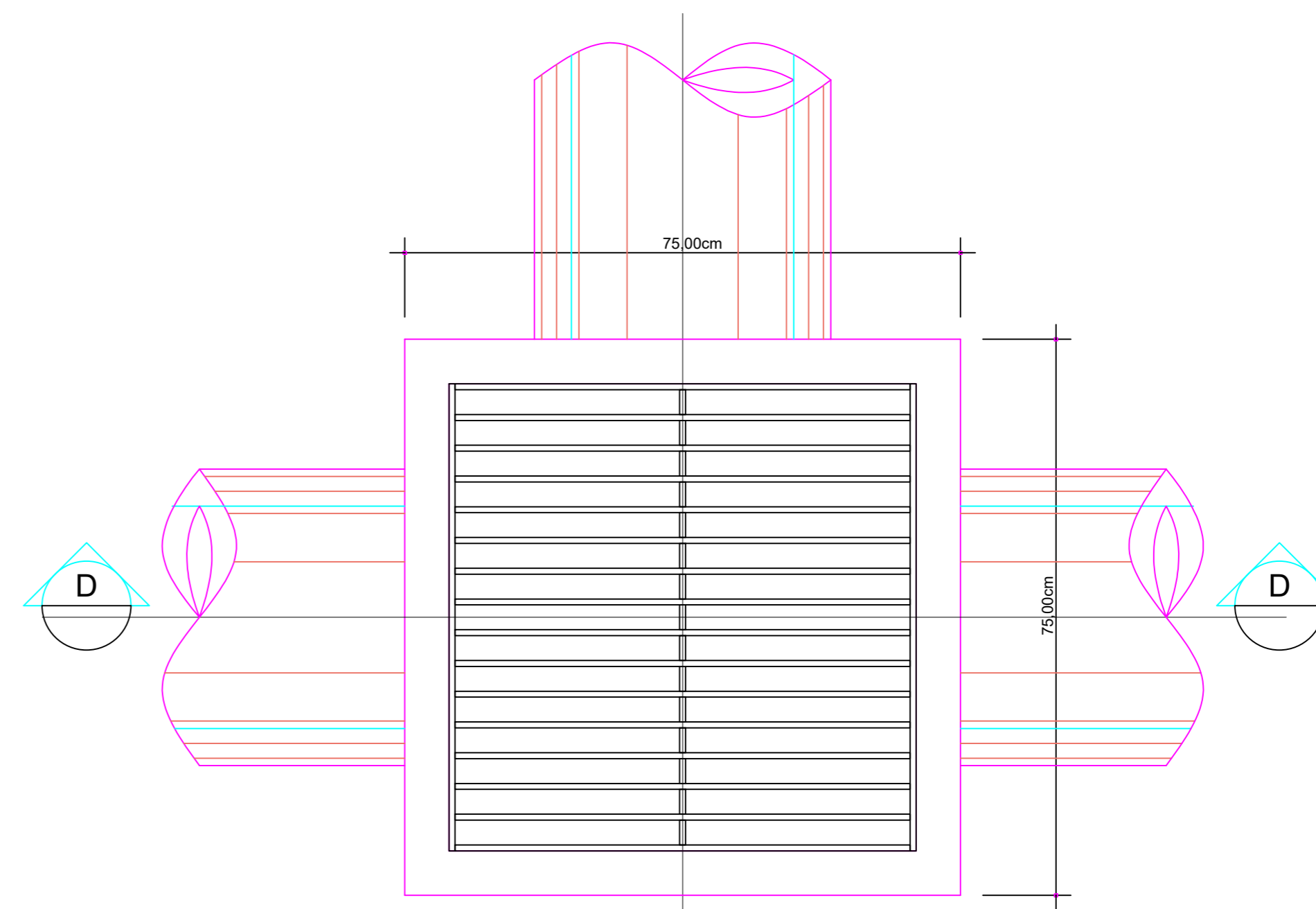
PLANTA 01  
ESCALA: 1/10



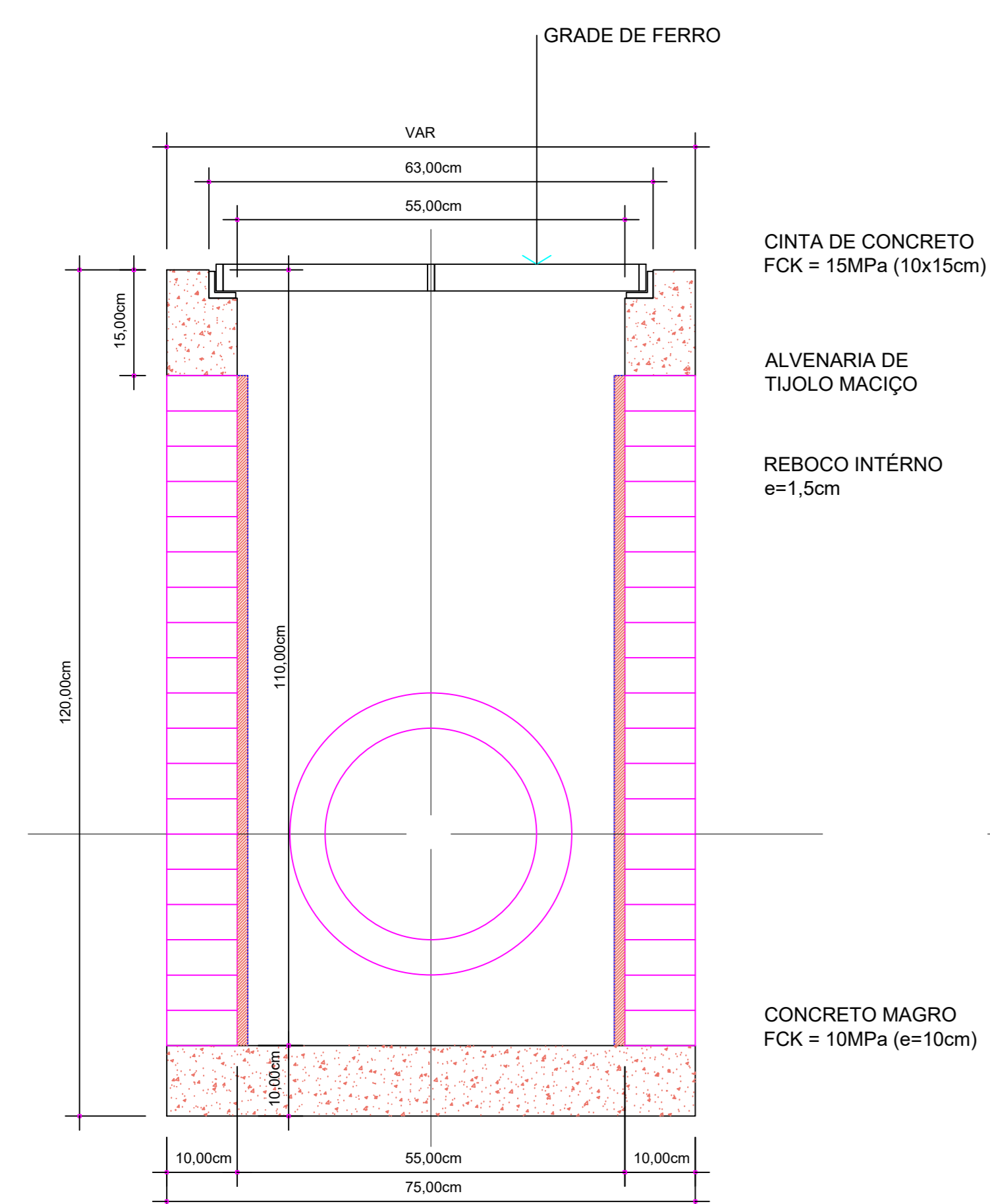
PLANTA 02  
ESCALA: 1/10



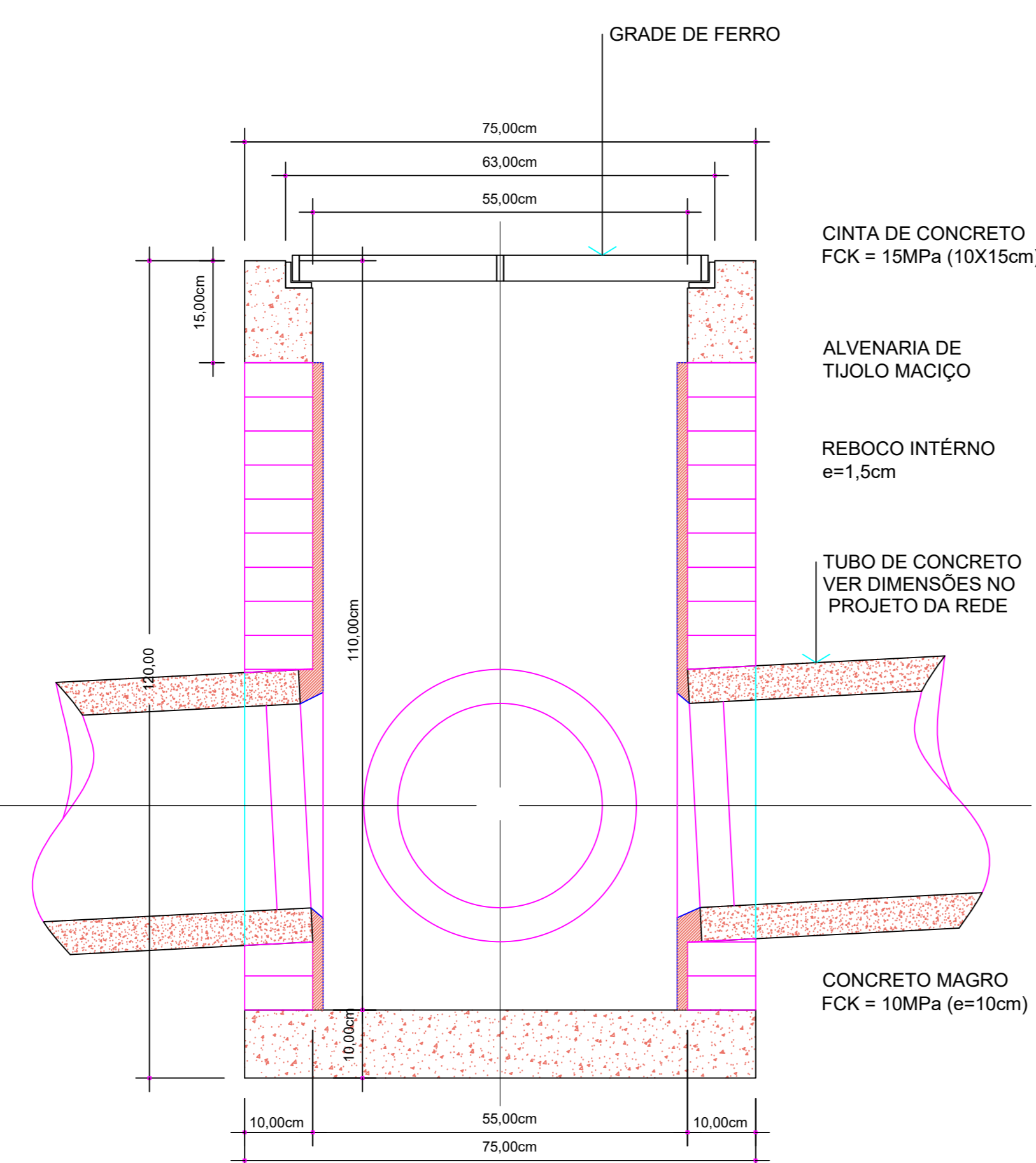
PLANTA 03  
ESCALA: 1/10



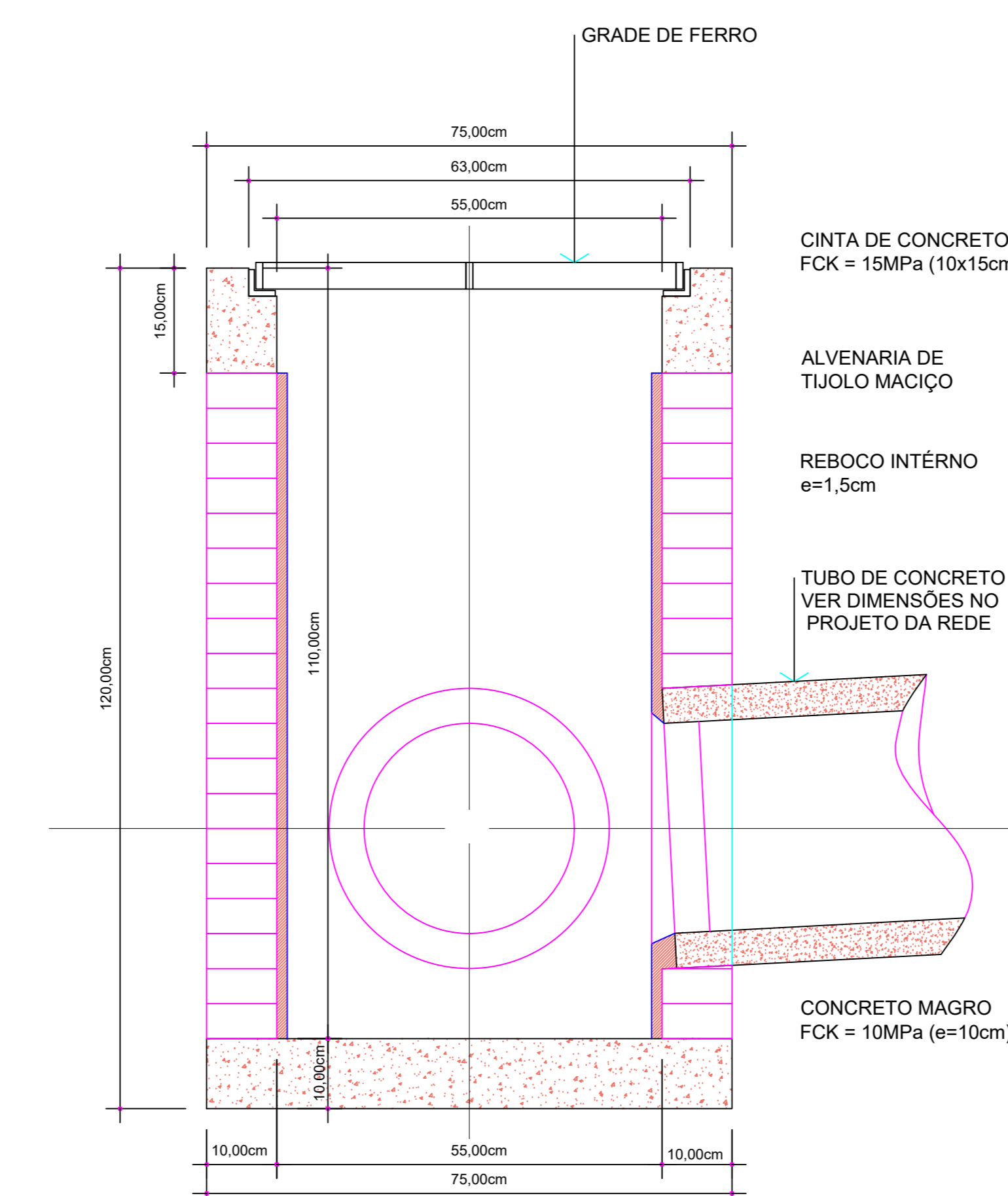
PLANTA 04  
ESCALA: 1/10



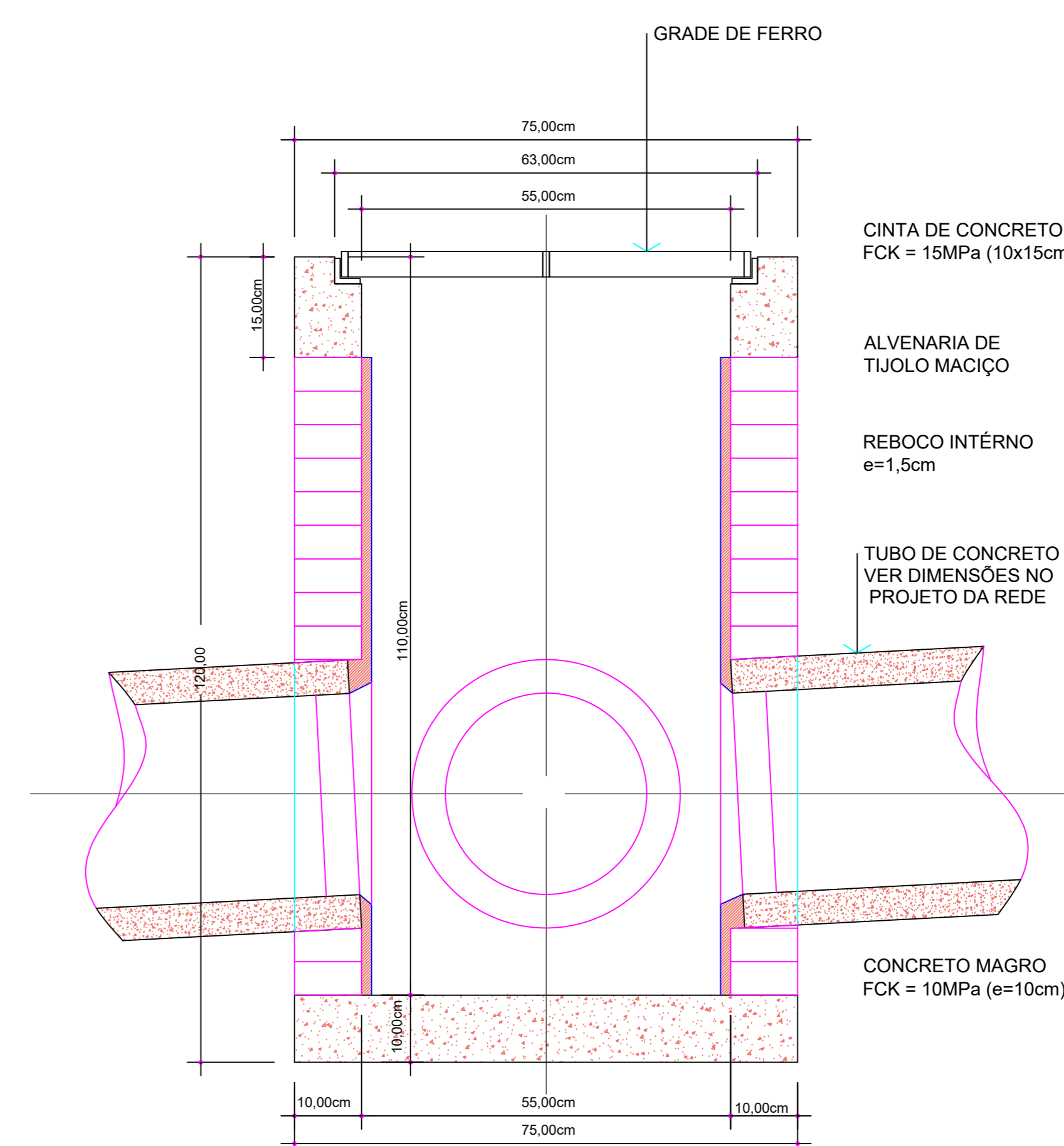
CORTE AA  
ESCALA: 1/10



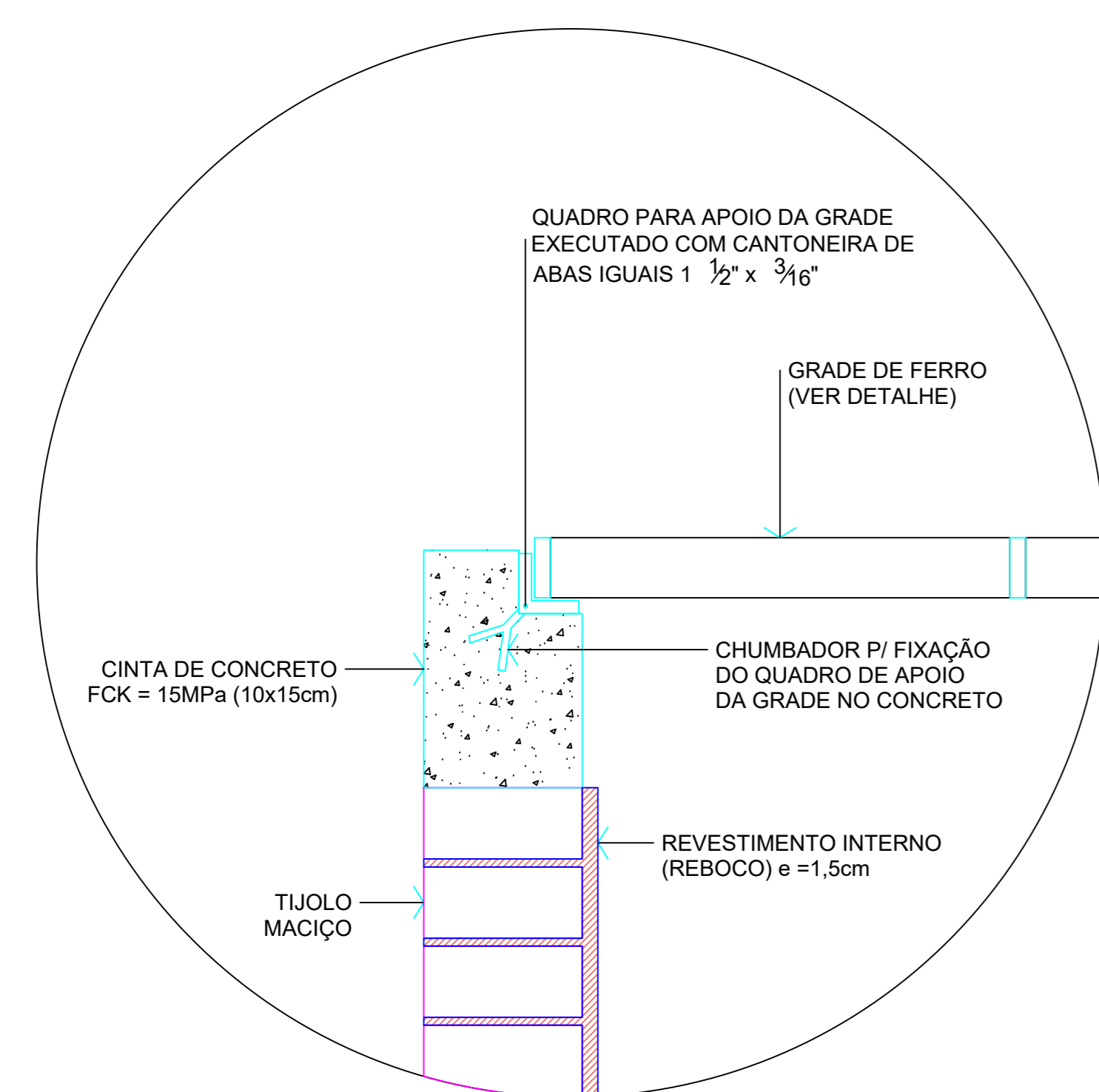
CORTE BB  
ESCALA: 1/10



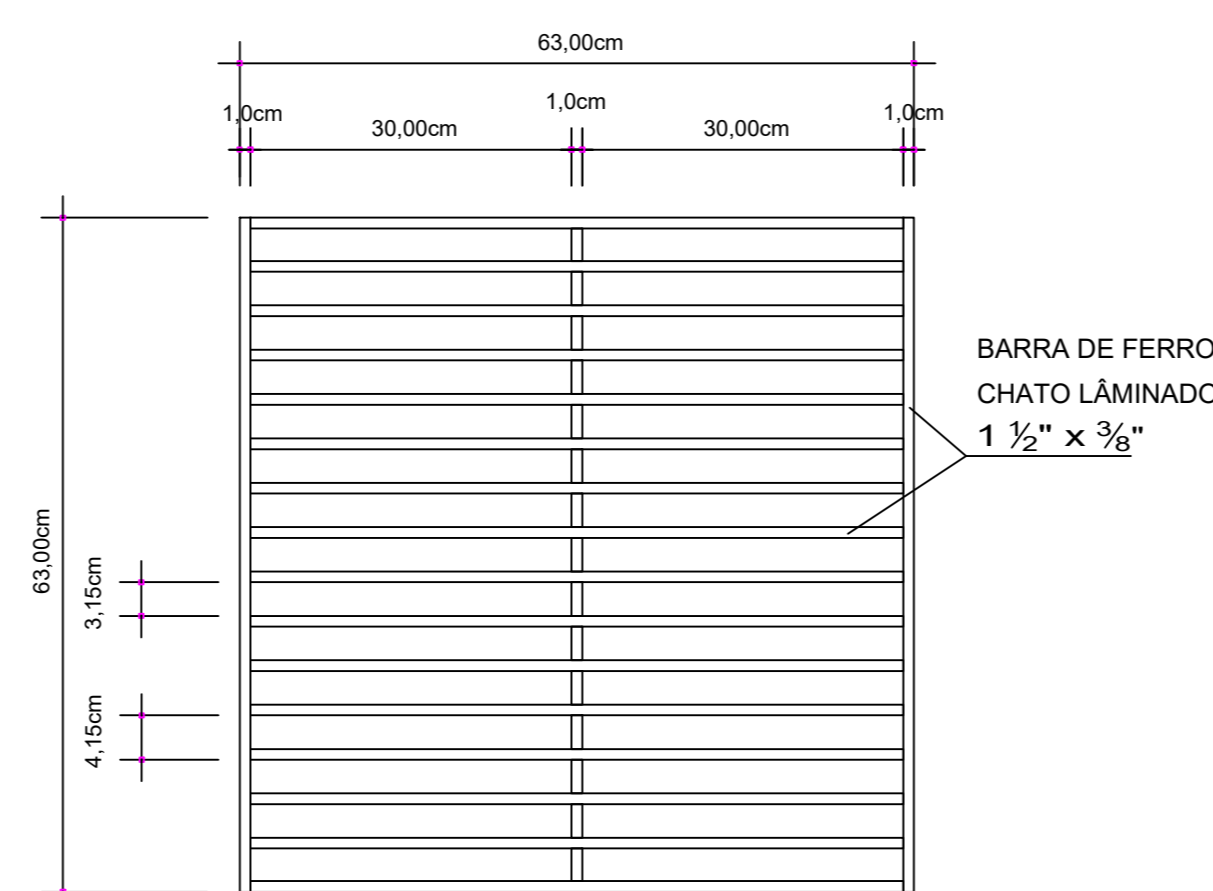
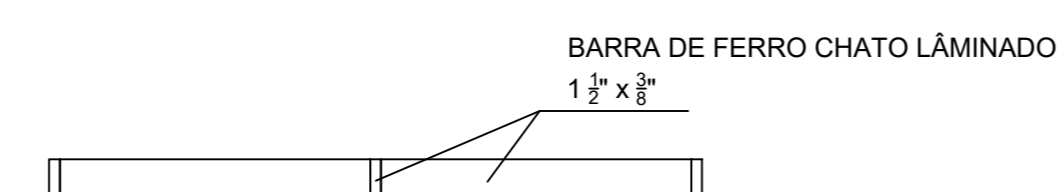
CORTE CC  
ESCALA: 1/10



CORTE DD  
ESCALA: 1/10



DETALHE APOIO DA GRADE  
ESCALA: 1/5



VISTA SUPERIOR  
DETALHE DA GRADE  
ESCALA: 1/10

 <b>PREFEITURA MUNICIPAL DE IPIRÁ</b>		
<b>PROJETO:</b> PAVIMENTAÇÃO RUA G e PARTE RUAS F e B - 1ª ETAPA LOTEAMENTO GALVÃO		
<b>ENDEREÇO DA OBRA:</b> LOTEAMENTO GALVÃO, CENTRO - IPIRÁ / SC	<b>ESCALA:</b> INDICADA	<b>PRANCHA:</b> <div style="text-align: right; font-size: 1.2em; font-weight: bold;">04/05</div>
<b>DESCRIÇÃO:</b> DETALHAMENTO BOCA DE LOBO	<b>DATA:</b> NOVEMBRO / 2023	<b>DESENHO:</b> Adriano Galvão
<b>RESP. PROJETO:</b> Liana Batzel Schneider Eng. Civil CREA SC - 177887-4 ART nº 9897747-4	<b>RESP. EXECUÇÃO:</b>	<b>PROPRIETÁRIO:</b> Prefeitura Municipal de Ipirá CNPJ nº 82.814.200/0001-65